



APARTMENT 11 WESTHOLME CLOSE, CONGLETON, CW12  
4FZ

OFFERS OVER £170,000



STEPHENSON BROWNE



Located on the second floor of a well-maintained development, this beautifully renovated two-bedroom apartment offers stylish, low-maintenance living within walking distance of Congleton town centre, local amenities, and the scenic Astbury Mere Country Park.

The property has been thoughtfully updated throughout, featuring a contemporary fitted kitchen with a range of integrated appliances, a modern bathroom with a sleek three-piece suite, and a new boiler installed in the last year. The apartment has also been cosmetically enhanced to a high standard, creating a bright and welcoming interior.

The internal accommodation comprises of a spacious entrance hall with secure entry call system, leading into a generous open-plan lounge and dining area ideal for both everyday living and entertaining. The kitchen is well-equipped with ample storage and modern fittings. There are two bedrooms, with the primary bedroom benefiting from built-in wardrobes and the second bedroom also offering fitted storage and a wardrobe, providing practical space.

Further benefits include two allocated parking spaces and a boarded loft with pull down ladders offering ample storage space.

This is a perfect opportunity for first-time buyers, downsizers, or investors looking for a turnkey property in a highly desirable location with excellent transport links and access to both nature and town amenities.





**Entrance Hall**

External front entrance door, two ceiling light fittings, central heating radiator, carpet flooring with front entrance matting, loft access (loft is partially boarded with pull down ladders and light fitting), entry call system, thermostat control.

**Lounge/Dining Room**

17'7" x 13'5" max  
UPVC double glazed window to the front elevation, two ceiling light fittings, two central heating radiators with radiator covers, carpet flooring, ample power points, TV Point, access into storage cupboard with space and plumbing for a washer or dryer, open access through to the Kitchen.

**Kitchen**

9'2" x 7'6"  
High gloss wall and base units with work surface over, paneled splash back, inset sink with single drainer and mixer tap, integrated oven and hob with extractor over, fridge freezer, eye level microwave, dishwasher and washing machine, central heating radiator with radiator cover, ample power points, paneled high gloss ceiling with ceiling light fitting, marble tile effect flooring, UPVC double glazed window to the rear elevation.

**Bedroom One**

12'5" x 9'6"  
UPVC double glazed window to the rear elevation, ceiling light fitting, two double built in wardrobes, carpet flooring, central heating radiator, TV point, houses the boiler, alcove with shelving, carbon monoxide reader.

**Bathroom**

6'2" x 5'2"  
Three piece white suite comprising low level WC, vanity unit with hand wash basin and mixer tap, low level bath with pillar taps and mixer shower over, tiled splash back, central heating radiator, high gloss paneled ceiling with ceiling light fitting, marble tile effect flooring, extractor fan.

**Bedroom Two**

8'6" x 8'2"  
UPVC double glazed window to the front elevation, ceiling light fitting, fitted storage cupboards and wardrobe, central heating radiator, carpet flooring, ample power points.

**Externally**

There are communal lawns next to the front entrance, along with two designated parking spaces.

**Tenure**

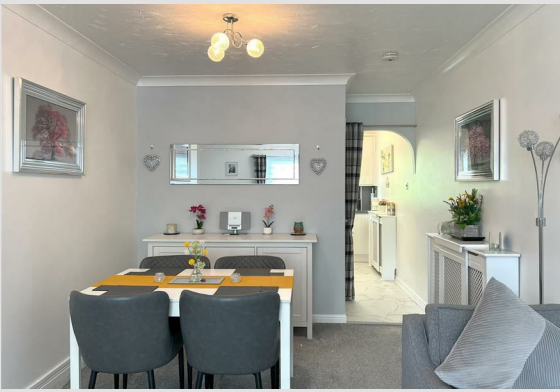
We understand from the vendor that the property is leasehold. We would however recommend that your solicitor check the tenure prior to exchange of contracts.

**Need to Sell?**

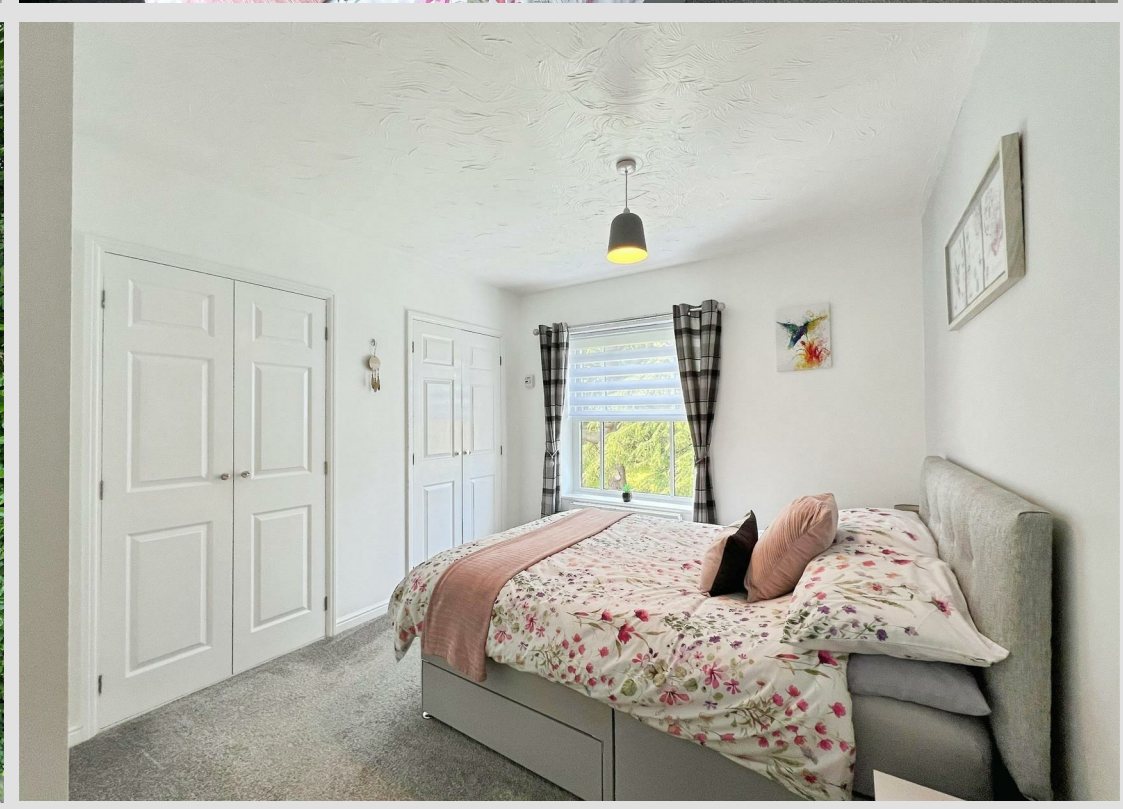
For a FREE valuation please call or e-mail and we will be happy to assist.

**AML Disclosure**

Agents are required by law to conduct Anti-Money Laundering checks on all those buying a property. Stephenson Browne charge £49.99 plus VAT for an AML check per purchase transaction . This is a non-refundable

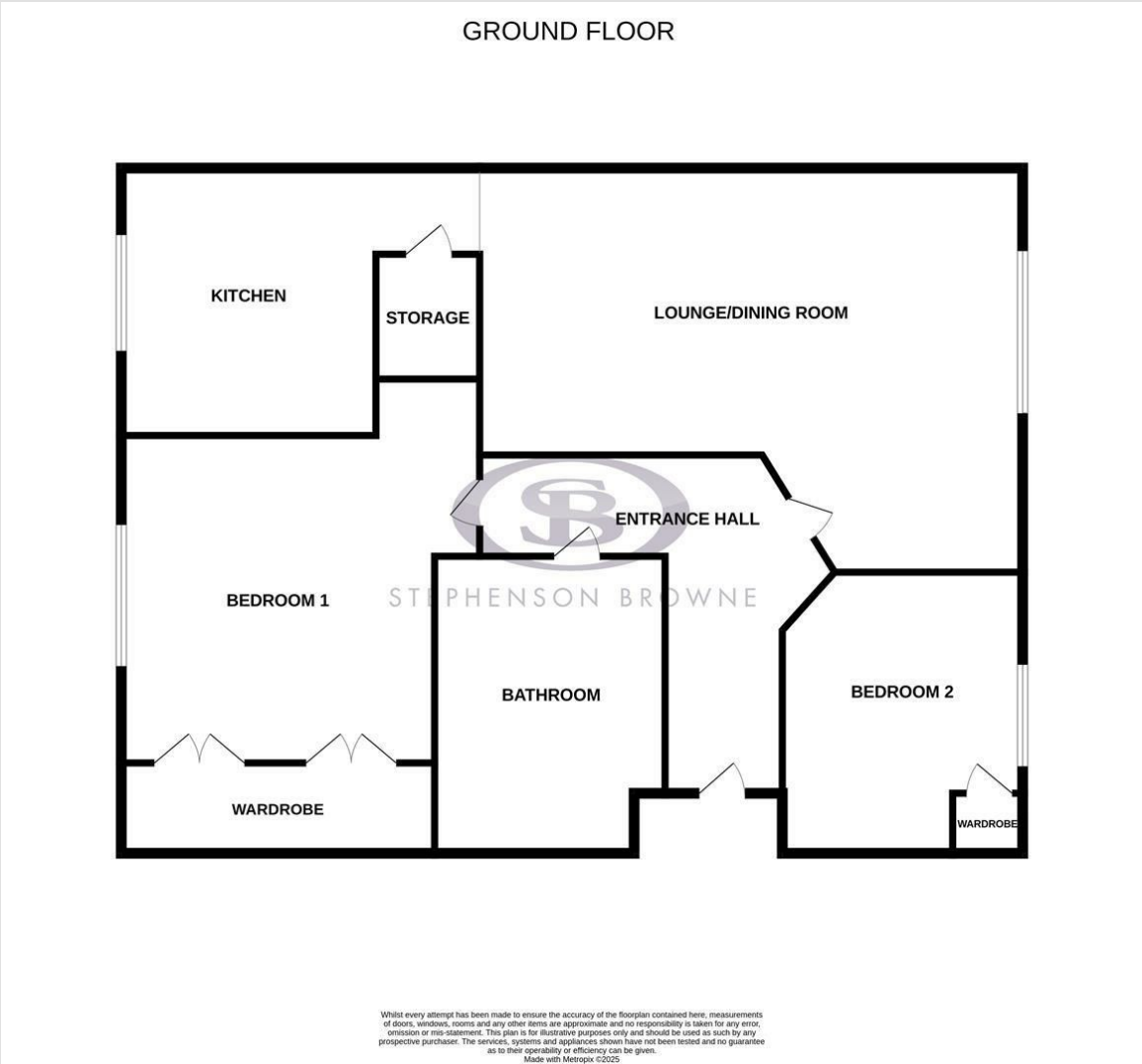








Floor Plan



Area Map



Energy Efficiency Rating		Current	Potential
Very energy efficient - lower running costs			
(92 plus) A			
(81-91) B			
(69-80) C			
(55-68) D			
(39-54) E			
(21-38) F			
(1-20) G			
Not energy efficient - higher running costs			
England & Wales		EU Directive 2002/91/EC	

Environmental Impact (CO <sub>2</sub> ) Rating		Current	Potential
Very environmentally friendly - lower CO <sub>2</sub> emissions			
(92 plus) A			
(81-91) B			
(69-80) C			
(55-68) D			
(39-54) E			
(21-38) F			
(1-20) G			
Not environmentally friendly - higher CO <sub>2</sub> emissions			
England & Wales		EU Directive 2002/91/EC	

Viewing

Please contact our Congleton Office on 01260 545600 if you wish to arrange a viewing appointment for this property or require further information.

NOTICE: Stephenson Browne for themselves and for the vendors or lessors of this property whose agents they are give note that: (1) the particulars are set out as a general guideline only for the guidance of intending purchasers or lessees. and do not constitute, nor constitute part of, an offer or contract; (2) all descriptions, dimensions, references to condition and necessary permissions for use and occupation, and other details are given in good faith and are believed to be correct but any intending purchasers or tenants should not rely on them as statements or representations of fact but must satisfy themselves by inspection or otherwise as to be the correctness of each theme; (3) no person in the employment of Stephenson Browne has any authority to make representation or warranty in relation to this property; (4) fixtures and fittings are subject to a formal list supplied by the vendors solicitor. Referring to: Move with Us Ltd Average fee: £123.64